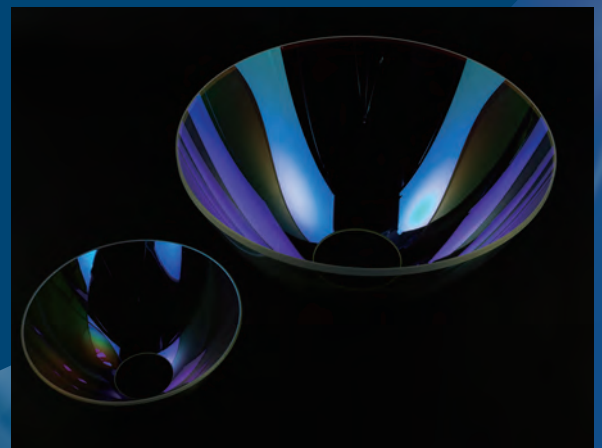


# Elliptical Reflectors

---



KOKUSAI KSE Elliptical Reflectors are designed and produced with high performance and can focus luminous flux efficiently of Xenon short arc, Super high pressure UV lamps and so on. KOKUSAI SHOJI can design and deposit many types of reflection also transmission coating from the Deep UV range to the infrared range with high quality. In addition, we design and produce water-cooled Metal Reflectors as well.

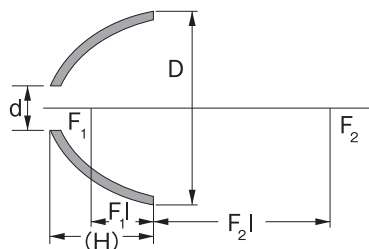
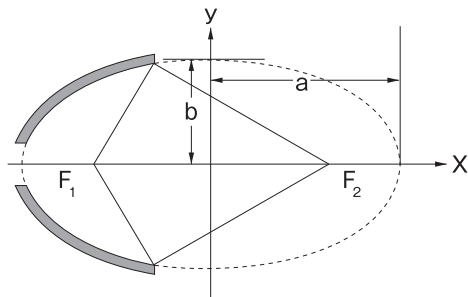


USE for PWB,FPD,TP,CSP and Semiconductor Lithography ( Exposure) systems.  
Solar Simulator, Fiber lighting unit, Various projectors and More.

---

# Elliptical Reflectors

## [Elliptical Reflectors]

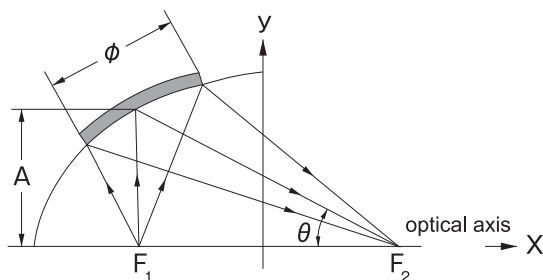


F1 : First focus point  
 F2 : Second focus point  
 D : Outside diameter  
 H : Height (after cutting hole for lamp)  
 d : Hole for lamp  
 F1L : Distance from end surface to F1  
 F2L : Distance from end surface to F2

Parts number	Outside diameter	Inside diameter	F <sub>1</sub>	F <sub>2</sub>	Height (H)	Hole diameter	F <sub>1</sub> l	F <sub>2</sub> l
KSE-64-11-78	64	(60)	11	78	(44)	18	31	36
KSE-88-14-134	86	(81)	14	134	(46)	20	32	88
KSE-105-22-145	105	(99)	22	145	(44)	27	20	103
KSE-106-18-234	106	(100)	18	234	(44)	32	28	188
KSE-115-17-272	113	(109)	17	272	(54)	27	36	219
KSE-128-18-288	128	(122)	18	288	(67)	31	50	220
KSE-148-28-252	148	(141)	28	252	(63)	30	35	189
KSE-150-22.5-360	150	(141)	22.5	360	(70)	40	48	290
KSE-180-30-280	180	(170)	30	280	(104)	40	76	174
KSE-220-40-440	220	(210)	40	440	(91)	60	53	347
KSE-300-50-800	300	(290)	50	800	(130)	80	82	668
KSE-352-56-804	352	(344)	56	804	(175)	90	125	623
KSE-362-60.5-873	362	(355)	60.5	873	(164)	90	108.5	704
KSE-450-75-900	448	(435)	75	900	(215)	100	153	672
KSE-600-100-2000	600	(588)	100	2000	(255)	130	158	1742

※ AL,CM,UV and more type of coating are available.Glass substrate material Soda lime or Tempax.  
 Please feel free to ask anything.

## [Off-axis elliptical Mirrors]



A : Axis displacement	10 mm ~
φ : Diameter	30 ~ 100 φ
θ : Off axis angle	7 ~ 45
F : Focus point	12 ~ 300mm
Deposition	Various



**KOKUSAI SHOJI Co.,LTD.**

<http://www.kokusaishoji.co.jp>

[Head Office]

2-2-2,Nihonbashi-Kayabacho,Chuo-ku,Tokyo,Zip 103-0025, JAPAN

Tel:+81-3-3666-1896 Fax:+81-3-3666-0425

[Komatsugawa factory]

4-64, Komatsugawa, Edogawa-ku, Tokyo, Zip 132-0034, JAPAN

[Akita factory]

158, Nakano, Nishi monai, ugo-machi, ogachi-gun, Akita, Zip 012-1131, JAPAN